

D6P_E4A

305 W - 325 W

Multi-Crystalline Photovoltaic Module



Positive power tolerance
0~+4.99 watt



Withstand strong snow load 5400 Pa / wind load 2400 Pa



Excellent low light performance
3.5% relative eff. reduction at low-irradiance (200W/m²)



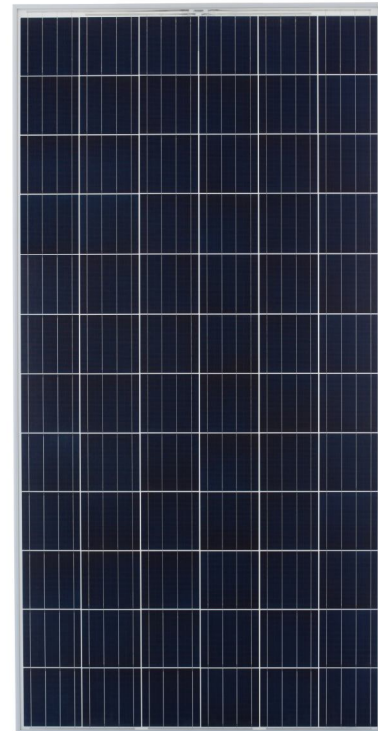
100% EL inline inspection
Better module reliability



Prolonged aging test
2000 hours damp heat test; 400 thermal cycles



Ammonia resistance
According to IEC 62716 Ed. 1



Reliability & Certification

Product guarantee: 10-year

Linear Performance Warranty

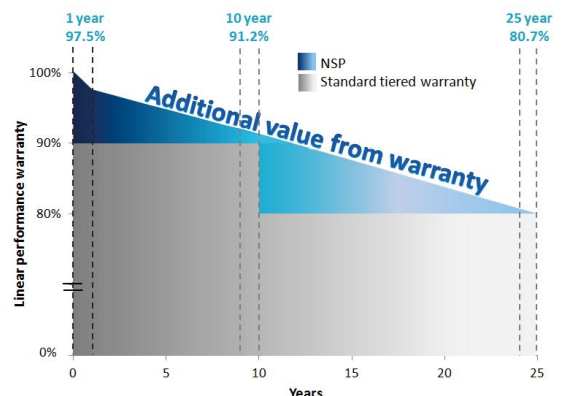
- 1-year: 97.5% power output
then power degradation 0.7% per year till 25th year

- 25-year: 80.7% power output

- 10-year: 91.2% power output

UL 1703, CEC, IEC 61215/IEC 61730, CE, MCS

* Please refer to NSP product warranty for details



For more information, please visit us at www.nsp.com



NEO SOLAR POWER

Electrical Data

MODEL	D6P 305 E4A	D6P 310 E4A	D6P 315 E4A	D6P 320 E4A	D6P 325 E4A
Maximum Rating Power (Pmax)	305 W	310 W	315 W	320 W	325 W
Module Efficiency	15.7%	16.0%	16.2%	16.5%	16.7%
Open Circuit Voltage (Voc)	45.35 V	45.68 V	45.91 V	46.15 V	46.38 V
Maximum Power Voltage (Vpm)	36.71 V	37.01 V	37.18 V	37.36 V	37.52 V
Short Circuit Current (Isc)	8.79 A	8.92 A	9.01 A	9.10 A	9.19 A
Maximum Power Current (Ipm)	8.31 A	8.39 A	8.49 A	8.58 A	8.68 A

*Electrical data under Standard Test Conditions (STC): Cell Temperature of 25 °C, Irradiance 1000 W/m², AM 1.5

*Values w/o tolerance are typical numbers

*Specifications subject to change

Mechanical Data

Item	Specification
Dimension	1956 mm (L) ¹ x 992 mm (W) ¹ x 35 mm (D) ² / 77" (L) ¹ x 39.1" (W) ¹ x 1.38" (D) ²
Weight	23 kg / 50.7 lbs
Solar Cell	72 multicrystalline 6" silicon cells
Front Glass	Anti-reflective tempered solar glass, 3.2 mm thickness
Cell Encapsulation	EVA (Ethylene-Vinyl-Acetate)
Back Cover	Composite film, white
Junction Box	IP 67 rated
Frame	Anodized aluminum frame, original or black
Packaging Configuration	30 pcs Per Pallet, 660 pcs Per 40' HQ container

¹ : With assembly tolerance of ± 2 mm [± 0.08"]
² : With assembly tolerance of ± 0.8 mm [± 0.03"]

Operating Conditions

Item	Specification
Mechanical Load	5400 Pa (Certified by TÜV Rheinland)
Maximum System Voltage	1000 VDC
Series Fuse Rating	15 A
Operating Temperature	-40 to 85 °C

Temperature Characteristics

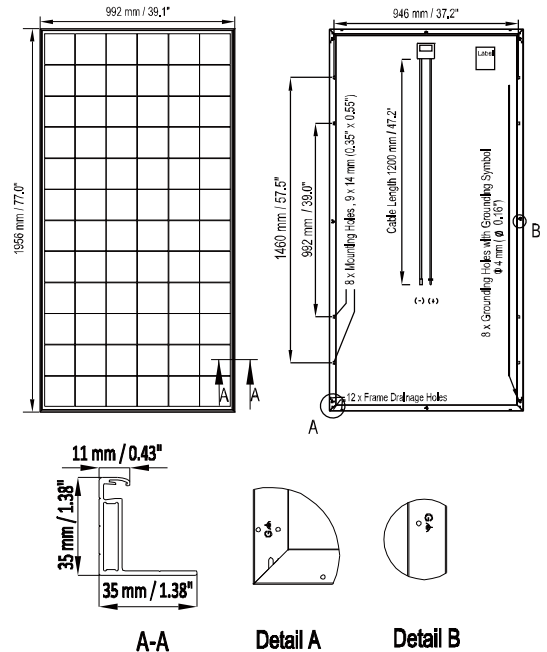
Item	Specification
Nominal Operating Cell Temperature	44°C ± 2°C
Temperature Coefficient of Isc	0.046 % / °C
Temperature Coefficient of Voc	-0.313 % / °C
Temperature Coefficient of Pmax	-0.420 % / °C

* Nominal Operating Cell Temperature (NOCT): Irradiance 800W/m², Ambient Temperature 20 °C, Wind Speed 1 m/s

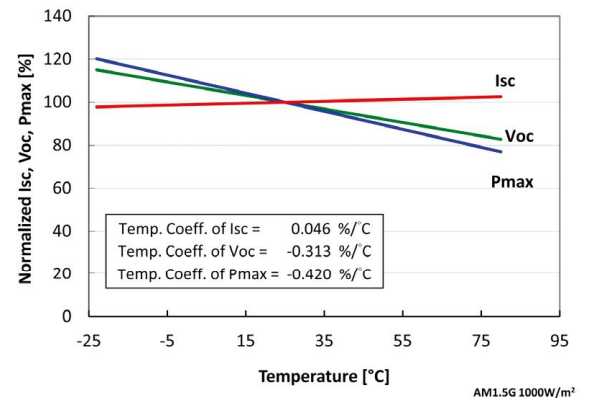
* Please refer to NSP's Standard Module Installation Manual before using the product

* Reduction in efficiency from 1000 W/m² to 200 W/m² at 25 °C: 3.5% ± 2 %

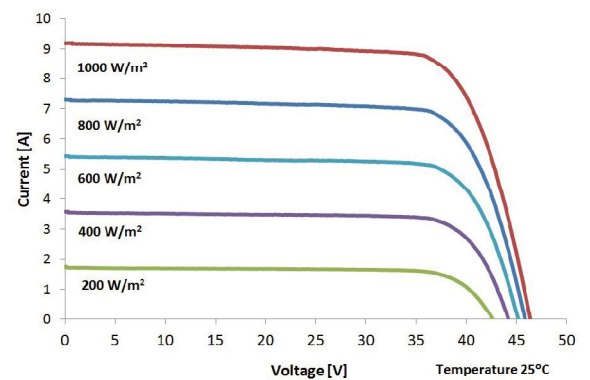
Front View & Back View



Dependence on Temperature



Dependence on Irradiance



Contact Us

Neo Solar Power Corporation

Headquarters: 7, Li-Hsin 3rd Rd., Hsinchu
 Science Park, Hsinchu, 30078, Taiwan

Tel: +886-3-578-0011
 Fax: +886-3-578-1255

www.nsp.com

Email: sales.module@nsp.com
 Website: www.nsp.com